

BEYOND  
**COLOR** by

N. A015  
**Astyl**<sup>®</sup>

**ACABADOS** FINISHES

## Acerca de nuestras pinturas

### Pinturas de aplicación exterior AAMA 2604 & 2605

Contamos con una línea completa de recubrimientos en polvo de alto rendimiento súper durables destinados a aplicaciones arquitectónicas como fachadas, pérgolas, revestimientos, rejas, entre otras aplicaciones.

### Coatings for exterior application AAMA 2604 & 2605

We have a complete line of super durable high performance powder coatings for architectural applications such as facades, pergolas, screening, balustrades, and other applications.



Nuestros acabados cuentan con una excelente retención de brillo y color que esto se traduce en excelente durabilidad ofreciendo un producto de excelente calidad, altamente resistente ideal para exteriores e interiores. Estas soluciones en acabados son económicas a largo plazo al no representar un alto costo en mantenimiento. Nuestras soluciones arquitectónicas cuentan con estos acabados que son de bajo impacto ambiental ya que el panel pintado se puede retirar y reciclar al 100% en el futuro.

Our coatings have an excellent retaining of brightness and color, offering an excellent quality, highly resistant product ideal for exteriors and interiors applications. These coatings solutions are economical in the long term as they do not represent a high maintenance cost. Our architectural solutions have these finishes that have a low environmental impact due to the painted panel can be removed and recycled 100% in the future.

# Rasoline colores sólidos

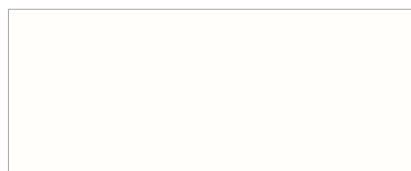
Rasoline Solid colors



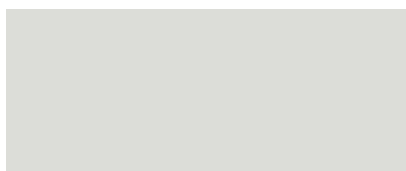
INTERIOR



EXTERIOR



Satin | BST1  
Seashell White



Satin | GST1  
Sky Grey



Satin | GST2  
Ash Grey



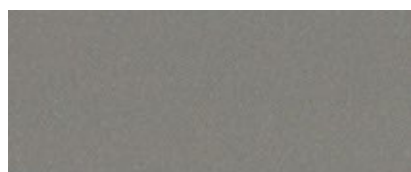
Satin | GST3  
Grey



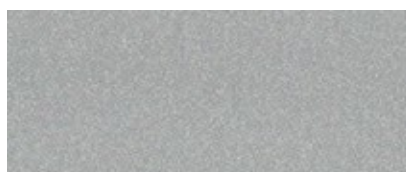
Satin | GST4  
Slate Grey



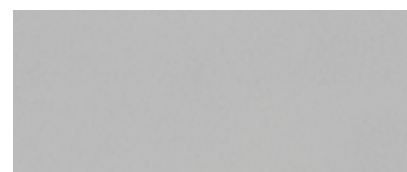
Satin | GST5  
Charcoal Grey



Metallic | GM1  
Pearl Dark Grey



Satin | PME1  
Bengal Silver



Metallic | PME2  
Anodized Silver



Satin | CST1  
Koko Brown



Satin | BRST1  
Medium Bronze



# Rasoline colores sólidos

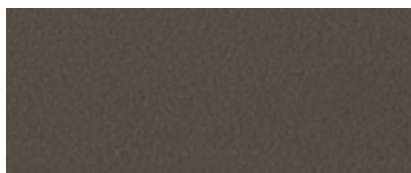
Rasoline Solid colors



INTERIOR



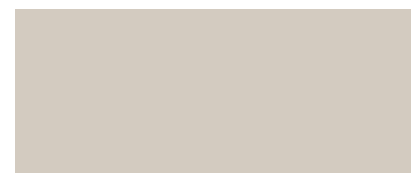
EXTERIOR



Metallic | BRME1  
Medium Bronze



Satin | AST1  
Almond



Satin | AST2  
Sandstone



Satin | SST1  
Sierra Tan



Satin | RST1  
Redwood



Matte | RMA1  
Brick Red



Metallic | CBME1  
Venetian Copper



Satin | VST2  
Classic Green



Matte | CBMA1  
Aged Copper



Satin | AZST1  
Military Blue



Matte | AZMA1  
Interstate Blue



Satin | NST1  
Jet Black





# Apariencia pátina y acabados especiales

Patina look and special finishes



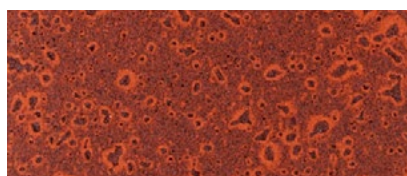
INTERIOR



EXTERIOR



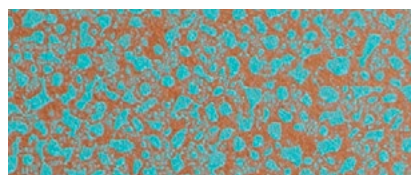
PTCO1  
Garnet Corten



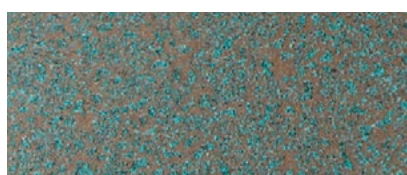
PTCO2  
Onice Corten



PTCO3  
Dark Corten



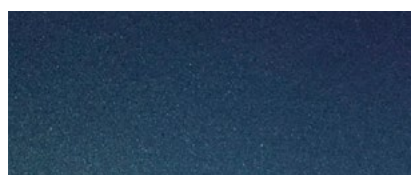
PTCP1  
Jade Copper



PTCP2  
Jasper Copper



SPC2  
Fire Alive



SPC1  
Galactic - Sky





# Anodizados | Disponible solo en aluminio

Anodized | Available in Aluminum only



INTERIOR



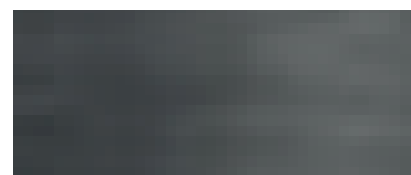
EXTERIOR



ADZ2  
Gold



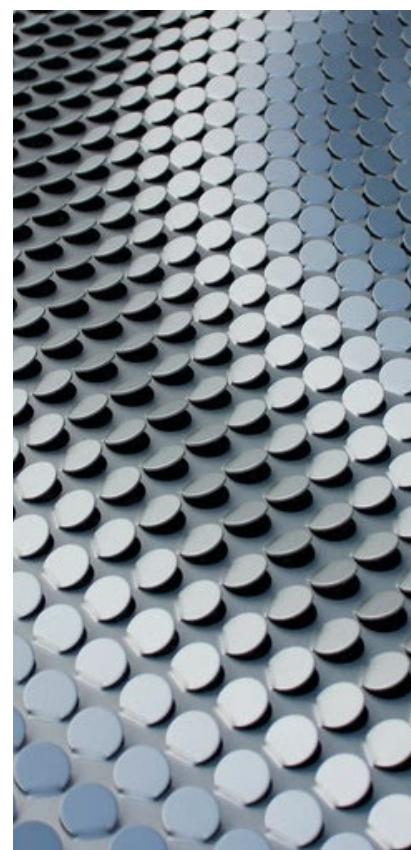
ADZ1  
Silver



ADZ3  
Noir

El acabado Anodizado aumenta el aislamiento eléctrico, protege de la corrosión y al desgaste. Este acabado aumenta las capacidades de durabilidad del aluminio volviendolo un revestimiento durable y altamente estético.

The anodized finish increases electrical insulation, protects against corrosion and wear. This finish increases the durability capabilities of aluminum, making it a durable and highly aesthetic coating.



N. A015  
**Astyl**<sup>®</sup>

C Valle Sol 122  
La Diana  
SPGG, 66266  
81 2139 3560

[astyl.com](http://astyl.com)

